

MADRID
23-25 MAY

3 DAYS | ENGLISH
TRANSLATED INTO SPANISH

MILAN
13-15 JUNE

3 DAYS | ITALIAN

NANTES
19-21 SEPT.

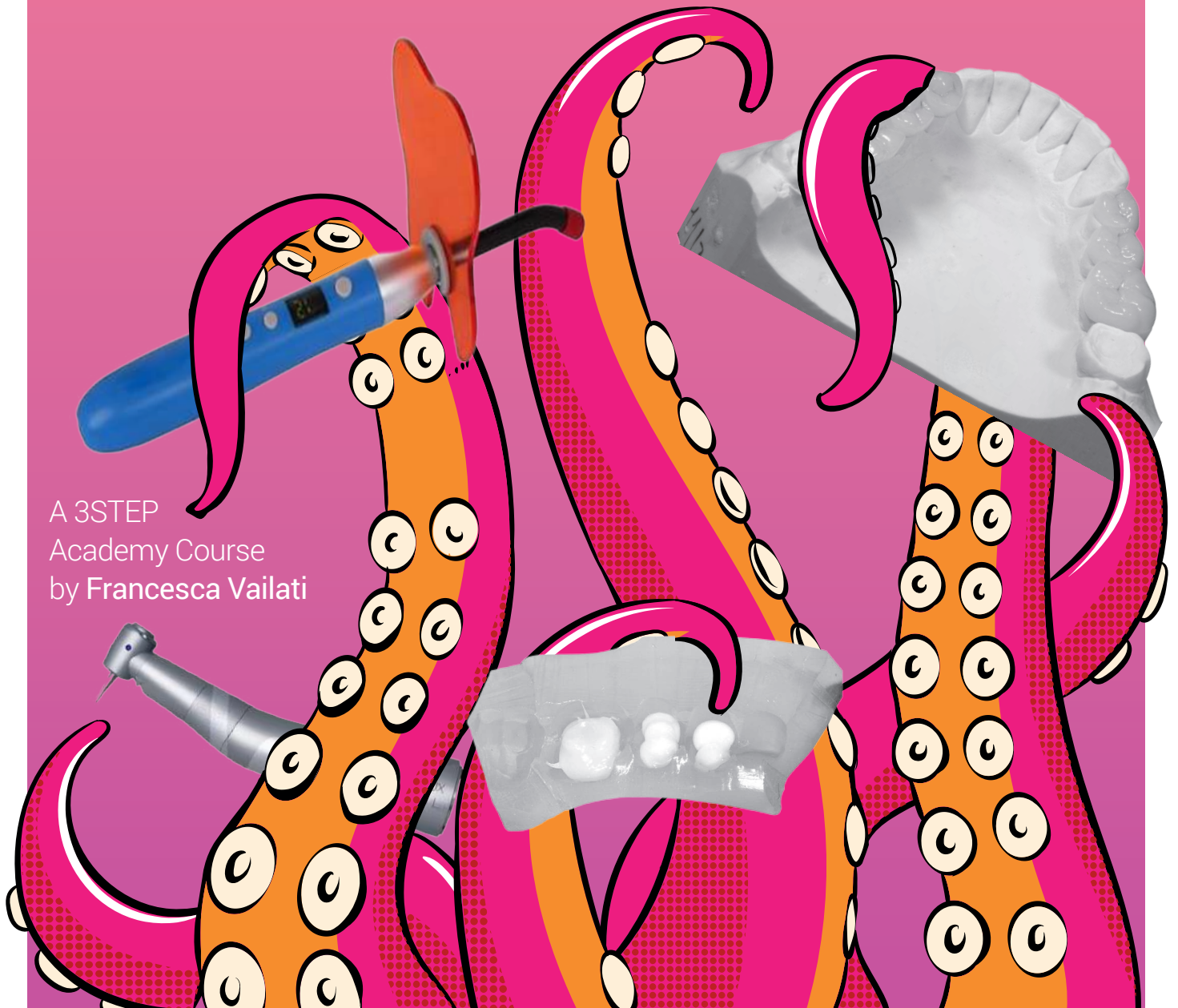
3 DAYS | FRENCH

MADRID
21-23 NOV.

3 DAYS | ENGLISH
TRANSLATED INTO SPANISH

HANDS ON

Ready to face a real 3STEP case,
from the occlusal adjustments to the Additive veneers?



A 3STEP
Academy Course
by Francesca Vailati

3STEPACADEMY

THE COURSE

The HANDS ON course is designed to explain the technical aspects of the 3STEP technique following the treatment of a real patient by Dr. Vailati in her private practice. The patient complained that “her bite was always uncomfortable,” despite several dentists trying to solve her problem with multiple interventions.

The complexity of this case allows for the discussion of clinical and laboratory issues, such as keeping existing ceramic restorations and integrating them with the new posterior support, recycling existing implant-supported restorations in the White Bite, and even addressing a unilateral posterior cross-bite with the important decision about the future shape of the Posterior Garages.

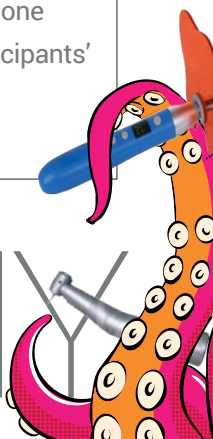


For the first time, participants will perform the correct occlusal adjustments on articulated models after having delivered the Direct White Bite.

THIS PRACTICAL PART IS PRICELESS.

Participants will present their own Additive Veneers (fabricated by their lab techs). The restorations will be photographed and evaluated one by one by Dr. Vailati to train participants' eyes and help their technicians deliver better restorations.

3STEP ACADEMY



THE PROGRAM

DAY 1

1.30 h Additive Prosthodontics

1.30 h How do we chew?

1.30 h **HANDS ON**
The GTest

1.30 h Posterior Garages
LAB Project

DAY 2

HANDS ON
Transparent Key

HANDS ON
Direct White Bite

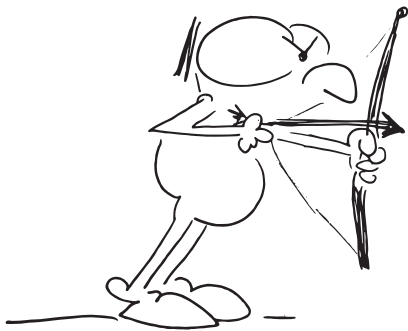
HANDS ON
Occlusal Adjustments

DAY 3

HANDS ON
Occlusal Adjustments

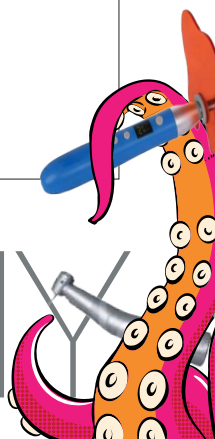
Additive Veneers

HANDS ON
Additive Veneers
participants' evaluation
and their modifications



THE OBJECTIVES

- Learn how a real case is restored following the 3STEP workflow
- Evaluate your own chewing pattern using the GTest
- Control the validity of the digital laboratory project for the posterior teeth
- Learn how to fabricate a transparent key and a direct White Bite
- Identify the Posterior Garages and their role in the static and dynamic functional conflicts
- Perform occlusal adjustments on the articulated models to distribute the load in MIP
- Adjust the shape of the posterior teeth, thinking about the Posterior Garages to avoid Dynamic conflicts
- Evaluate the laboratory work of your technician during the fabrication of the Additive veneers.



To your reconstructive questions... this course will have the ANSWER!

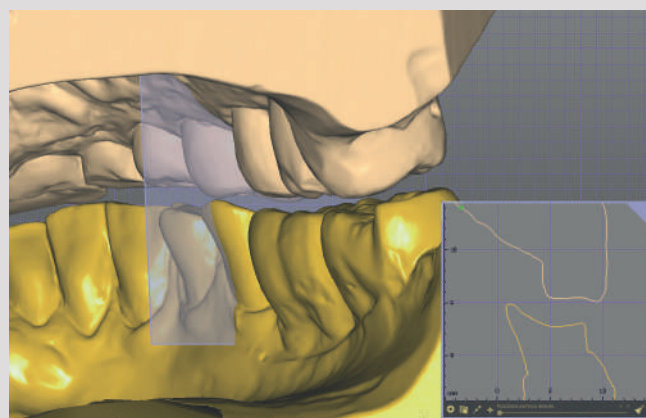


ANTERIOR STOP

How should the shape be of the future Anterior Garage and the associated increased VDO for the posterior restorations?

DIGITAL WAX UP

Can you analyse the digital project for the posterior support before the White Bite? Do you like the shape of the future Posterior Garages?



OCCLUSAL ADJUSTMENTS

After delivering the White Bite, are you able to perform the occlusal adjustments?

ADDITIVE VENEERS

Which objectives do you want to achieve in restoring these anterior teeth? Tacos or Palatal veneers?



SIGN UP NOW FOR YOUR

HANDS ON

MADRID
23-25 MAY
3 DAYS | ENGLISH
TRANSLATED INTO SPANISH

MILAN
13-15 JUNE
3 DAYS | ITALIAN

NANTES
19-21 SEPT.
3 DAYS | FRENCH

MADRID
21-23 NOV.
3 DAYS | ENGLISH
TRANSLATED INTO SPANISH



MARKETINGTEAM@3STEPACADEMY.COM



FOLLOW THE 3STEPACADEMY

3STEPACADEMY

